



Ultra-Secure Remote Computer Backup



Backing up with

**total
control
backUp**



Administer Total Control Backup - ID JA825801

File Edit Configure Backup Restore Inspect Support


Power Options Information

Important Information for Laptop Users

Power Options

- Backup will not run if computer is in Standby or Hibernation state
- Assure your computer is awake when plugged in
 - ◆ Click the Start button
 - ◆ Choose Settings
 - ◆ Choose Control Panel
 - ◆ Choose Power Options or Power Management
 - ◆ Choose Power Schemes
- Set the computer to never Standby or Hibernate or Turn Off Hard Disks when Plugged In
- Set options for Battery operation as you like
- Leave laptop plugged in at night when backup runs

Ok



The screenshot shows the 'Power Options Properties' dialog box with the 'Power Manager' tab selected. It displays the 'Laptop Normal' power scheme. The settings for this scheme are as follows:

When computer is:	Plugged in	Running on batteries
Turn off monitor:	Never	After 5 mins
Turn off hard disks:	Never	After 20 mins
System standby:	Never	After 1 hour
System hibernates:	Never	Never

It is essential that the computer not power down, hibernate or power down hard disk

The backup will occur automatically. However, you may choose to run one at any time.




Double-click the Remote Backup desktop shortcut and click the Backup menu item

Administer Total Control Backup - ID JA825801

File Edit Configure Backup Restore Inspect Support

Backup

total control backup 

Regular Backup

[Backup Now](#) **Perform a regular backup now, for all new or changed files within your selection list**

Local Backups

Local Now Backup defined Local jobs now

On Demand

Custom Now Choose a specific file, or group of files, to backup right now. Stored as an Archive.

Full System

Initial To Disk Create a backup of all the folders you've chosen to a local or external drive

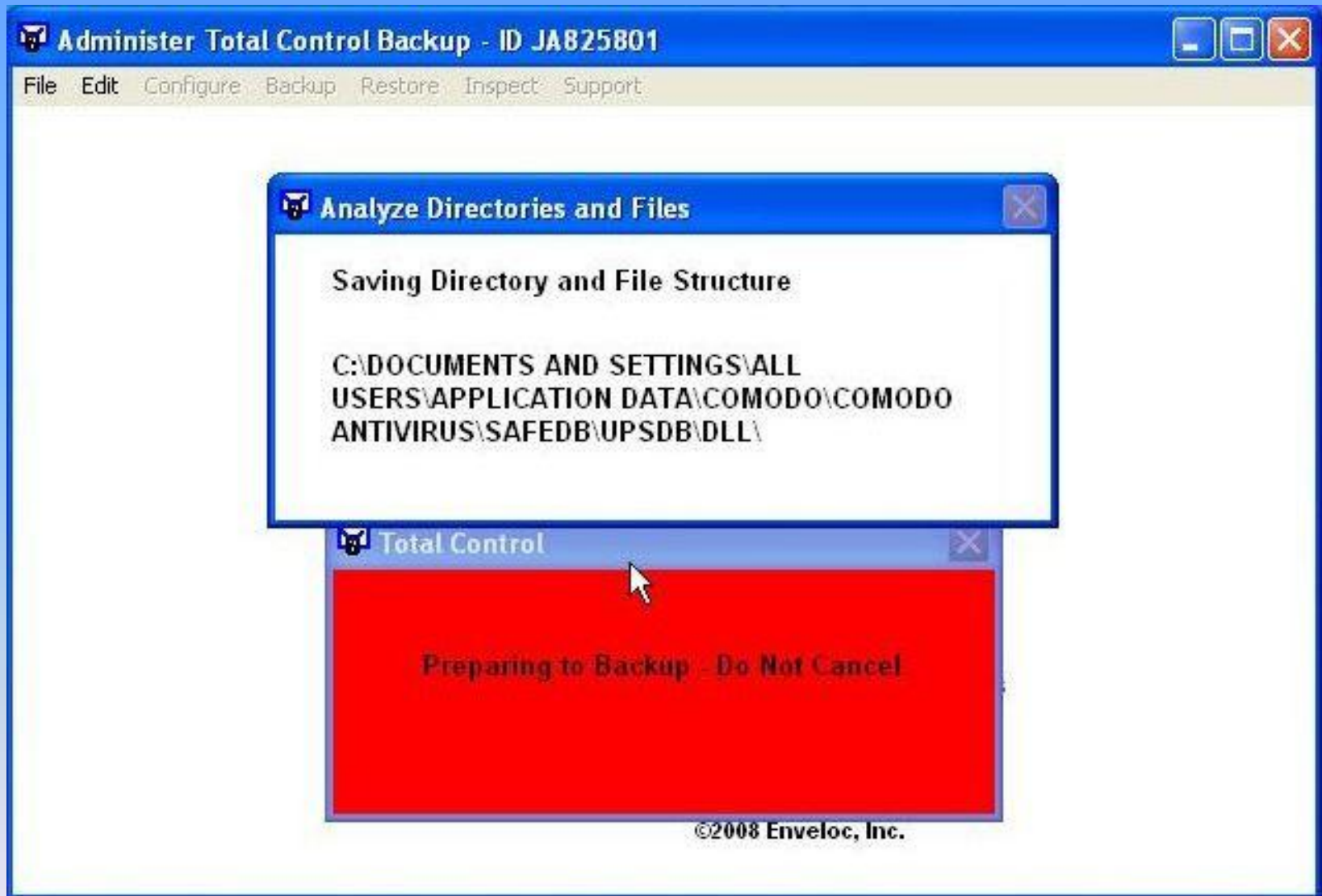
Send From Disk Transmit a 'backup to disk' you created with the 'To Disk' option above

[<-Back](#)

For a regular backup, click Backup Now

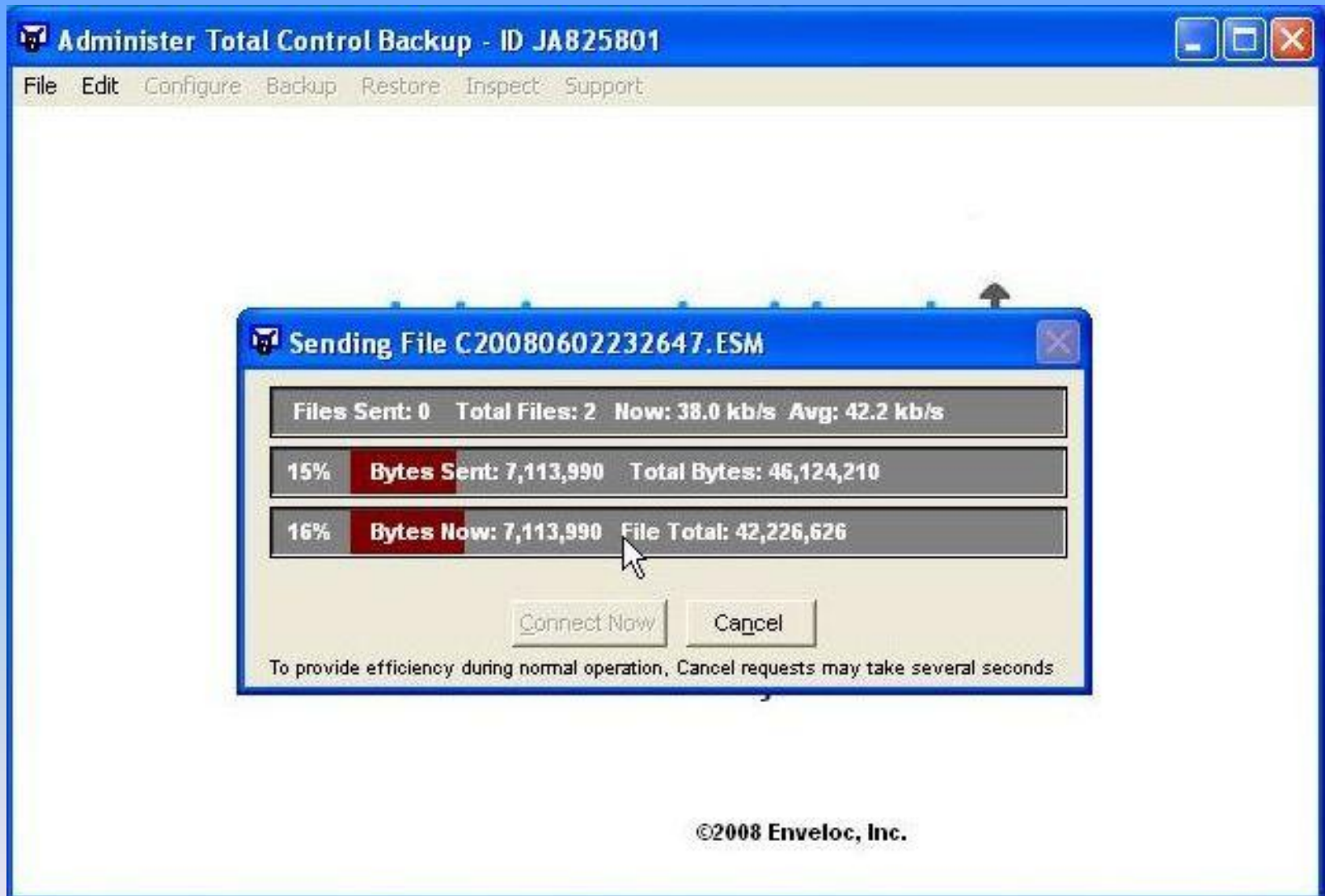


If your initial backup has not begun you will get this prompt. Click Yes to proceed



The backup begins. This could take some time, according to how much data is selected

The backup is then sent to the server. Your backup may contain a number of ESM files



This process may be repeated a number of times



When your initial backup is complete, this notice will be displayed

If you back up manually, remember to close the menu afterwards



The automatic backup will not take place if the menu is open at the scheduled time



After the initial backup completes, manual backups will display this screen



Or this screen, if no new or changed files were found to back up