



Enveloc[®]

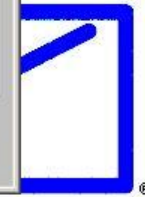
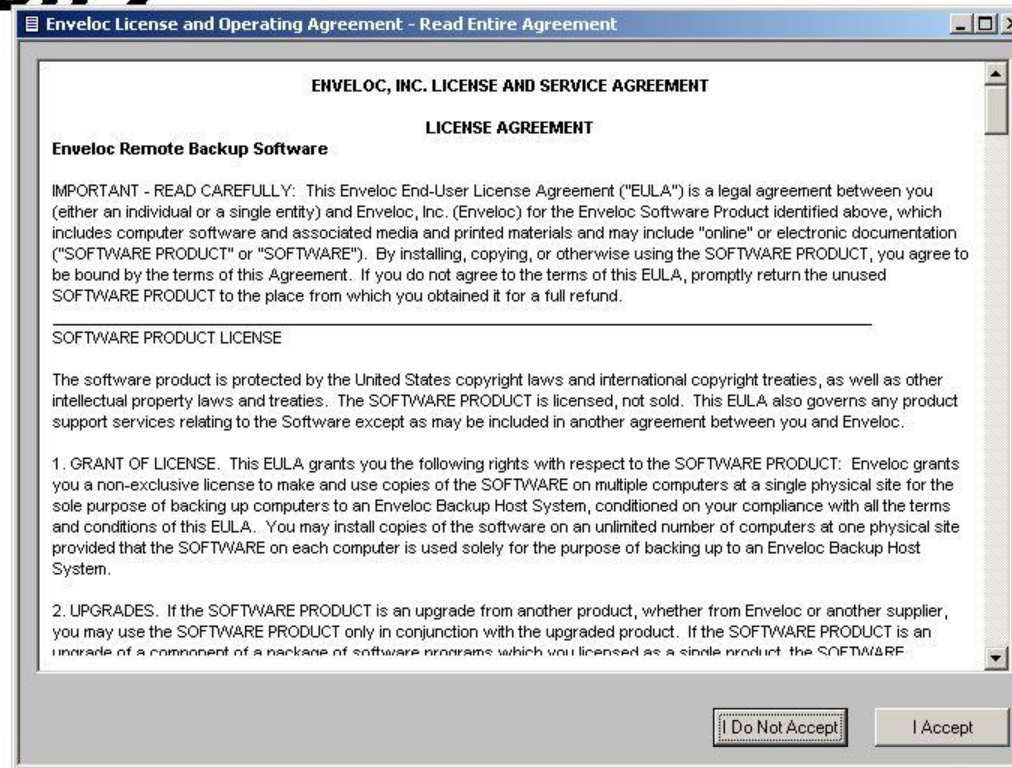
USA Technology & Research Park
775 N. University Blvd. Ste. 110
Mobile, AL 36608-4545
877-368-3562 toll-free

[Enveloc Downloads](#)

Enveloc Pro Installation Checklist:

- Make sure printer is installed and available.
- Consult the appropriate personnel within your business to decide which data needs to be backed up offsite.
- Decide upon an encryption key that will be needed to restore data. The encryption key must be at least 24 characters, including spaces, letters and numbers .
- If your initial backup size is over 10GBs of uncompressed data, we recommend that you use the software feature *Initial Backup to Disk*.

Install Enveloc Remote Backup Version 7



by **Enveloc**

ENVELOC, INC. LICENSE AND SERVICE AGREEMENT

LICENSE AGREEMENT

Enveloc Remote Backup Software

IMPORTANT - READ CAREFULLY: This Enveloc End-User License Agreement ("EULA") is a legal agreement between you (either an individual or a single entity) and Enveloc, Inc. (Enveloc) for the Enveloc Software Product identified above, which includes computer software and associated media and printed materials and may include "online" or electronic documentation ("SOFTWARE PRODUCT" or "SOFTWARE"). By installing, copying, or otherwise using the SOFTWARE PRODUCT, you agree to be bound by the terms of this Agreement. If you do not agree to the terms of this EULA, promptly return the unused SOFTWARE PRODUCT to the place from which you obtained it for a full refund.

SOFTWARE PRODUCT LICENSE

The software product is protected by the United States copyright laws and international copyright treaties, as well as other intellectual property laws and treaties. The SOFTWARE PRODUCT is licensed, not sold. This EULA also governs any product support services relating to the Software except as may be included in another agreement between you and Enveloc.

1. **GRANT OF LICENSE.** This EULA grants you the following rights with respect to the SOFTWARE PRODUCT: Enveloc grants you a non-exclusive license to make and use copies of the SOFTWARE on multiple computers at a single physical site for the sole purpose of backing up computers to an Enveloc Backup Host System, conditioned on your compliance with all the terms and conditions of this EULA. You may install copies of the software on an unlimited number of computers at one physical site provided that the SOFTWARE on each computer is used solely for the purpose of backing up to an Enveloc Backup Host System.

2. **UPGRADES.** If the SOFTWARE PRODUCT is an upgrade from another product, whether from Enveloc or another supplier, you may use the SOFTWARE PRODUCT only in conjunction with the upgraded product. If the SOFTWARE PRODUCT is an upgrade of a component of a package of software programs which you licensed as a single product, the SOFTWARE

Do Not Accept

I Accept

Remote Backup may operate in one of two modes: *Pro* or *LocalRemote*

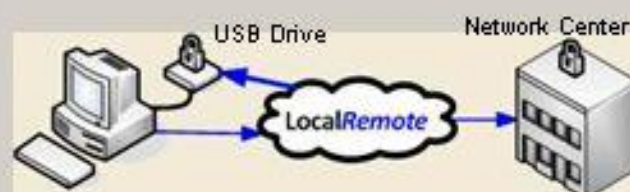
Pro

- Stores backup sets as follows:
 - ♦ 1 copy at primary secure remote server site
 - ♦ 1 copy at secondary secure remote server site
Server sites are geographically separate
- No additional hardware required
- Priority telephone support



LocalRemote

- Stores backup sets as follows:
 - ♦ 1 copy to USB attached hard drive
 - ♦ 1 copy at primary secure remote server site
- Requires user-supplied external USB drive **(please attach now)** [More >>](#)
- Standard telephone support



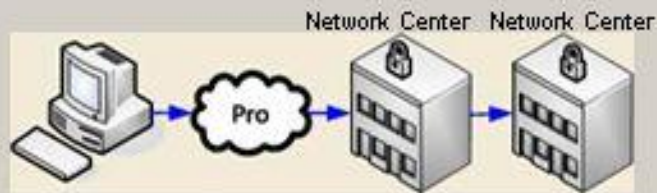
You will be able to select and confirm which mode at the Service screen



Remote Backup may operate in one of two modes: *Pro* or *LocalRemote*

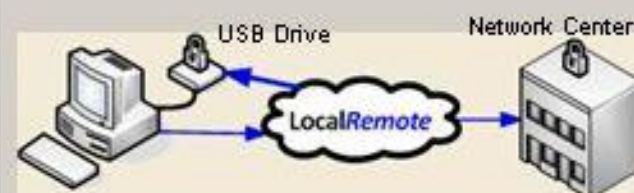
Pro

- Stores backup sets as follows:
 - ♦ 1 copy at primary secure remote server site
 - ♦ 1 copy at secondary secure remote server site
Server sites are geographically separate
- No additional hardware required
- Priority telephone support

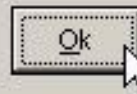


LocalRemote

- Stores backup sets as follows:
 - ♦ 1 copy to USB attached hard drive
 - ♦ 1 copy at primary secure remote server site
- Requires user-supplied external USB drive **(please attach now)** [More >>](#)
- Standard telephone support



You will be able to select and confirm which mode at the Service screen



Install Enveloc Remote Backup

File

Exam
Checkir

Select Installation Drive

The most favorable drives for programs and working files have been selected. The files will be installed into the roots of the selected drives, into folders called "enveloc", which will be created if they do not exist. If necessary, programs and working files can be installed on the same drive.

Remote Backup will install to the following paths:

- C:\Enveloc** Programs and internal files
- E:\Enveloc** Backup set working files

To change these selections or to see complete details, please click the Advanced button.

NUM

File

Exam

Checkir

Select Installation Drive

The most favorable drives for programs and working files have been selected. The files will be installed into the roots of the selected drives, into folders called "enveloc", which will be created if they do not exist. If necessary, programs and working files can be installed on the same drive.

Install Remote Backup Programs to Drive (defaults to operating system drive):

- Drive E Total Space: 160.00 Gb Free Space:158.80 Gb 99.25 %
- Drive C Total Space: 39.93 Gb Free Space: 30.59 Gb 76.61 %

Install Remote Backup Working Files to Drive (defaults to largest free space):

- Drive E Total Space: 160.00 Gb Free Space:158.80 Gb 99.25 %
- Drive C Total Space: 39.93 Gb Free Space: 30.59 Gb 76.61 %

Ok Advanced Cancel

Install Enveloc Remote Backup




File

Clean Up

Remove Temporary Files

Enveloc Alert [X]

 Remote Backup Files Successfully Installed. Press OK to Configure.

OK

NUM

Administer Enveloc Backup

File Edit Window Help

Important Notice - Read Carefully



If you are installing now in order to recover a previous installation of Remote Backup, press the Recover button. For a normal installation, press the Continue button.

©2008 Enveloc, Inc.

Administer Enveloc Backup

File Edit Window Help

Create Enveloc Encryption Key

- **Make up an Encryption Key to protect your information**
- **Must be 24 - 48 characters including spaces - use any characters**
- **Encryption Key is case sensitive and known only to you (unless you ask us to keep a copy)**

Example: Mary Had a Little Lamb 1234!

Write your key down in 2 places and keep it safe - without your exact key, your data cannot be recovered (an opportunity to print it will appear in a moment)!

If you would like to hide characters as you type them, check here

Enter Encryption Key:

passwordpasswordpassword

24

Confirm Encryption Key:

passwordpasswordpassword

24

You must provide and answer a Security Question so that if your system is destroyed, the original credentials can be recovered on a new machine.

Use a custom question for my hint

What was the color of your first car?

white

Supply my key automatically from the local copy during restorations on this machine

I would like Enveloc to store my Encryption Key on their server

OK

Cancel

Administer Enveloc Backup

File Edit Window Help

Create Enveloc Encryption Key

- **Make up an Encryption Key to protect your information**
- **Must be 24 - 48 characters including spaces - use any characters**
- **Encryption Key is case sensitive and known only to you (unless you ask us to keep a copy)**

Example: Mary Had a Little Lamb 1234!

Write your key down in 2 places and keep it safe - without your exact key, your data cannot be recovered (an opportunity to print it will appear in a moment)!

If you would like to hide characters as you type them, check here

Enter Encryption Key:

passwordpasswordpassword

24

Confirm Encryption Key:

passwordpasswordpassword

24

You must provide and answer a Security Question so that if your system is destroyed, the original credentials can be recovered on a new machine.

Use a custom question for my hint

What was the color of your first car?

white

Supply my key automatically from the local copy during restorations on this machine

I would like Enveloc to store my Encryption Key on their server

OK

Cancel

Administer Enveloc Backup

File Edit Window Help

Create Enveloc Encryption Key

- **Make up an Encryption Key to protect your information**
- **Must be 24 - 48 characters including spaces - use any characters**
- **Encryption Key is case sensitive and known only to you (unless you ask us to keep a copy)**

Example: Mary Had a Little Lamb 1234!

Write your key down in 2 places and keep it safe - without your exact key, your data cannot be recovered (an opportunity to print it will appear in a moment)!

If you would like to hide characters as you type them, check here

Enter Encryption Key:

passwordpasswordpassword

24

Confirm Encryption Key:

passwordpasswordpassword

24

You must provide and answer a Security Question so that if your system is destroyed, the original credentials can be recovered on a new machine.

Use a custom question for my hint

What was the color of your first car?

white

Supply my key automatically from the local copy during restorations on this machine

I would like Enveloc to store my Encryption Key on their server

OK

Cancel

Administer Enveloc Backup

File Edit Window Help

Create Enveloc Encryption Key

- Make up an Encryption Key to protect your information
- Must be 24 - 48 characters including spaces - use any characters
- Encryption Key is case sensitive and known only to you (unless you ask us to keep a copy)

Example: Mary Had a Little Lamb 1234!

Write your key down in 2 places and keep it safe - without your exact key, your data cannot be recovered (an opportunity to print it will appear in a moment)!

If you would like to hide characters as you type them, check here

Enter Encryption Key:

passwordpasswordpassword

24

Confirm Encryption Key:

passwordpasswordpassword

24

You must provide and answer a Security Question so that if your system is destroyed, the original credentials can be recovered on a new machine.

Use a custom question for my hint

what is the meaning of life?

42

Supply my key automatically from the local copy during restorations on this machine

I would like Enveloc to store my Encryption Key on their server

OK

Cancel

Administer Enveloc Backup

File Edit Window Help

Create Enveloc Encryption Key

- **Make up an Encryption Key to protect your information**
- **Must be 24 - 48 characters including spaces - use any characters**
- **Encryption Key is case sensitive and known only to you (unless you ask us to keep a copy)**

Example: Mary Had a Little Lamb 1234!

Write your key down in 2 places and keep it safe - without your exact key, your data cannot be recovered (an opportunity to print it will appear in a moment)!

If you would like to hide characters as you type them, check here

Enter Encryption Key:

passwordpasswordpassword

24

Confirm Encryption Key:

passwordpasswordpassword

24

You must provide and answer a Security Question so that if your system is destroyed, the original credentials can be recovered on a new machine.

Use a custom question for my hint

What was the color of your first car?

white

Supply my key automatically from the local copy during restorations on this machine

I would like Enveloc to store my Encryption Key on their server

OK

Cancel

Administer Enveloc Backup

File Edit Window Help

Create Enveloc Encryption Key

- **Make up an Encryption Key to protect your information**
- **Must be 24 - 48 characters including spaces - use any characters**
- **Encryption Key is case sensitive and known only to you (unless you ask us to keep a copy)**

Example: Mary Had a Little Lamb 1234!

Write your key down in 2 places and keep it safe - without your exact key, your data cannot be

Microsoft Visual FoxPro



By instructing Enveloc to maintain a secure, encrypted copy of your Encryption Key, you are relinquishing complete control of your Key and acknowledge that Enveloc has access to your Key.

OK Cancel

credentials can be recovered on a new machine.

Use a custom question for my hint

What was the color of your first car? white

Supply my key automatically from the local copy during restorations on this machine

I would like Enveloc to store my Encryption Key on their server

OK Cancel

Create Enveloc Encryption Key

- Make up an Encryption Key to protect your information
- Must be 24 - 48 characters including spaces - use any characters
- Encryption Key is case sensitive and known only to you (unless you ask us to keep a copy)

Example: Mary Had a Little Lamb 1234!

Write your key down in 2 places and keep it safe. Without your exact key, your data cannot be recovered.

Enveloc Message



Just to be sure you have a copy of your Encryption Key, you'll have an opportunity to print it on 2 sheets of paper at the end of the setup process.

Encryption Key Saved!

OK

Your credentials can be recovered on a new machine.

Use a custom question for my hint

What was the color of your first car? white

Supply my key automatically from the local copy during restorations on this machine

I would like Enveloc to store my Encryption Key on their server

OK Cancel

Administer Enveloc Backup [minimize] [maximize] [close]

File Edit Configure Backup Restore Inspect Support

Update Machine Information [minimize] [maximize] [close]

Your Name:

Machine Name (a name describing this computer):

Company Name:

Physical Address:

Physical Address 2:

City: State: Zip/Postal:

Country (if not USA)

Phone Number:

Fax Number:

E-mail (Administrative):

E-mail (Technical):

Primary computer use:
 Business Home

Computer Type:
 Workstation Server

Administer Enveloc Backup [minimize] [maximize] [close]

File Edit Configure Backup Restore Inspect Support

Update Machine Information [minimize] [maximize] [close]

Your Name:
_test xp

Machine Name (a name describing this computer):
New

Company Name:
_enveloc

Physical Address:
775 N. University Blvd.

Physical Address 2:
Suite 110

City: State: Zip/Postal:
Mobile AL 36608

Country (if not USA)

Phone Number:
251-476-8258

Fax Number:

E-mail (Administrative):
support@enveloc.com

E-mail (Technical):
support@enveloc.com

Primary computer use:
 Business Home

Computer Type:
 Workstation Server

Ok Cancel

Administer Enveloc Backup [minimize] [maximize] [close]

File Edit Configure Backup Restore Inspect Support

Update Machine Information [minimize] [maximize] [close]

Your Name:
__test Xp

Machine Name (a name describing this computer):
New

Company Name:
__enveloc

Physical Address:
775 N. University Blvd.

Physical Address 2:
Suite 110

City: State: Zip/Postal:
Mobile AL 36608

Country (if not USA)

Phone Number:
251-476-8258

Fax Number:

E-mail (Administrative):
support@enveloc.com

E-mail (Technical):
support@enveloc.com

Primary computer use:
 Business Home

Computer Type:
 Workstation Server

Ok Cancel

Administer Enveloc Backup [Window Title Bar]

File Edit Configure Backup Restore Inspect Support

Update Billing Information [Window Title Bar]

Credit Card or Account Information is transmitted and stored securely.

Type Card:	Company Billing Name	Card Expiration: MM/YY	Card Verification More>>	Referral Code, if any:
CO	Enveloc	/		

Billing Name:	_test Xp			
Billing Address:	775 N. University Blvd.			
Billing Address 2:	Suite 110			
Billing City/State/Zip:	Mobile	AL	36608	
Country (if not USA):				
Billing Phone:	251-476-8258			

Require Encryption Key to View Billing Information

Ok Cancel

©2008 Enveloc, Inc.

Administer Enveloc Backup



File Edit Configure Backup Restore Inspect Support

Update Billing Information



Credit Card or Account Information is transmitted and stored securely.

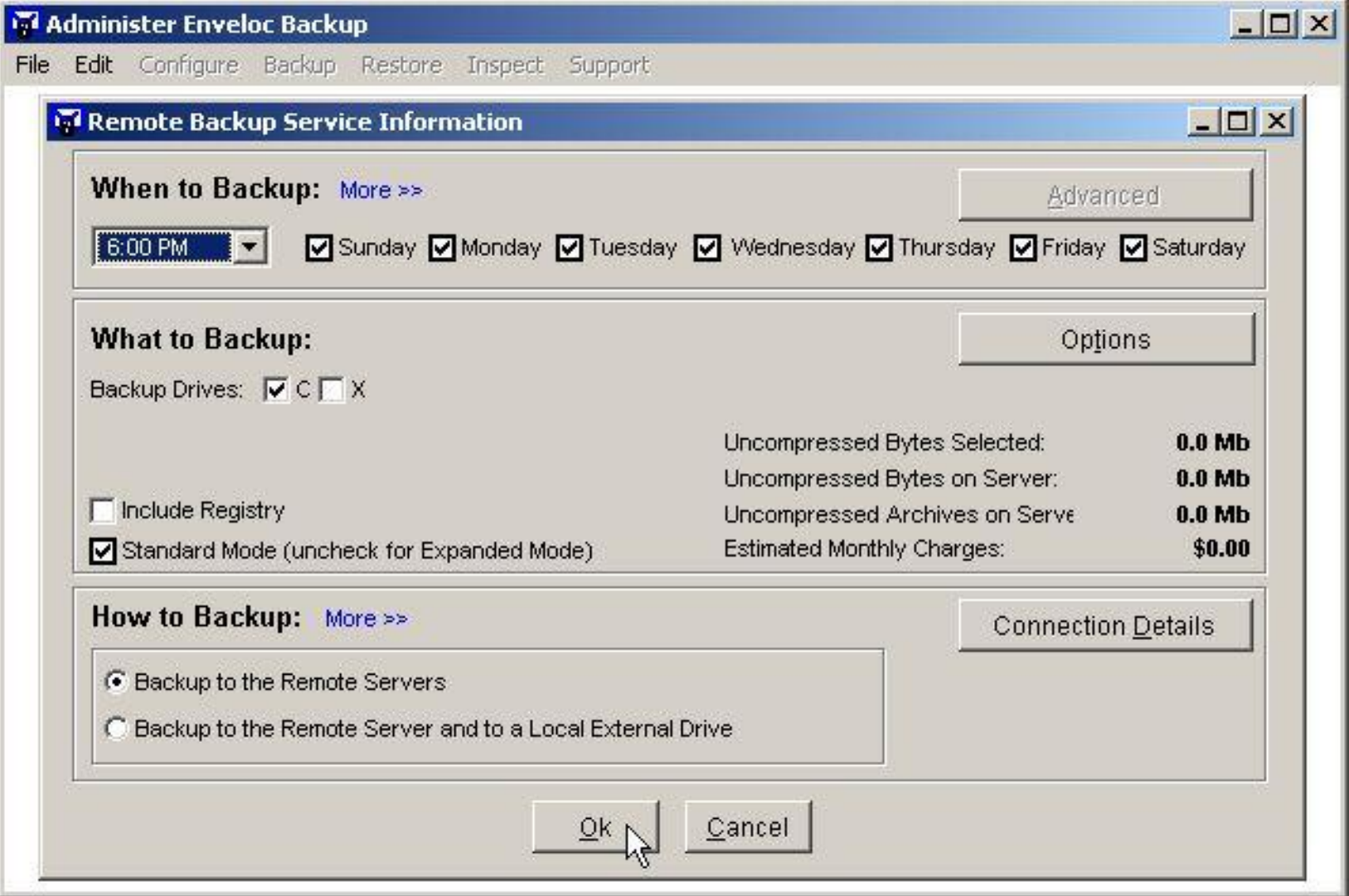
Type Card:	Company Billing Name	Card Expiration: MM/YY	Card Verification More>>	Referral Code, if any:
CO ▾	Enveloc	/		

Billing Name:	__test Xp			
Billing Address:	775 N. University Blvd.			
Billing Address 2:	Suite 110			
Billing City/State/Zip:	Mobile	AL	36608	
Country (if not USA):				
Billing Phone:	251-476-8258			

Require Encryption Key to View Billing Information

Ok Cancel

©2008 Enveloc, Inc.



Administer Enveloc Backup

File Edit Configure Backup Restore Inspect Support

Remote Backup Service Information

When to Backup: [More >>](#)

[Advanced](#)

- 6:00 PM
- 6:00 PM
- 6:30 PM
- 7:00 PM
- 7:30 PM
- 8:00 PM
- 8:30 PM
- 9:00 PM

Sunday Monday Tuesday Wednesday Thursday Friday Saturday

Backup:

[Options](#)

C X

include registry

Standard Mode (uncheck for Expanded Mode)

Uncompressed Bytes Selected: **0.0 Mb**
Uncompressed Bytes on Server: **0.0 Mb**
Uncompressed Archives on Serve: **0.0 Mb**
Estimated Monthly Charges: **\$0.00**

How to Backup: [More >>](#)

[Connection Details](#)

- Backup to the Remote Servers
- Backup to the Remote Server and to a Local External Drive

[Ok](#)

[Cancel](#)

Administer Enveloc Backup

File Edit Configure Backup Restore Inspect Support

Remote Backup Service Information

When to Backup: [More >>](#)

[Advanced](#)

6:00 PM

Sunday Monday Tuesday Wednesday Thursday Friday Saturday

What to Backup:

[Options](#)

Backup Drives: C X

Include Registry

Standard Mode (uncheck for Expanded Mode)

Uncompressed Bytes Selected: **0.0 Mb**

Uncompressed Bytes on Server: **0.0 Mb**

Uncompressed Archives on Serve: **0.0 Mb**

Estimated Monthly Charges: **\$0.00**

How to Backup: [More >>](#)

[Connection Details](#)

Backup to the Remote Servers

Backup to the Remote Server and to a Local External Drive

Ok

Cancel

Administer Enveloc Backup

File Edit Configure Backup Restore Inspect Support

Remote Backup Service Information

When to Backup: [More >>](#)

6:00 PM

- Sunday Monday Tuesday Wednesday Thursday Friday Saturday

[Advanced](#)

What to Backup:

Backup Drives: C X

Include Registry

Standard Mode (uncheck for Expanded Mode)

Uncompressed Bytes Selected:	0.0 Mb
Uncompressed Bytes on Server:	0.0 Mb
Uncompressed Archives on Serve	0.0 Mb
Estimated Monthly Charges:	\$0.00

[Options](#)

How to Backup: [More >>](#)

- Backup to the Remote Servers
- Backup to the Remote Server and to a Local External Drive

[Connection Details](#)

Ok

Cancel

Power Options Information

Important Information for Laptop Users

Power Options

- Backup will not run if computer is in Standby or Hibernation state
- Assure your computer is awake when plugged in
 - ◆ Click the Start button
 - ◆ Choose Settings
 - ◆ Choose Control Panel
 - ◆ Choose Power Options or Power Management
 - ◆ Choose Power Schemes
- Set the computer to never Standby or Hibernate or Turn Off Hard Disks when Plugged In
- Set options for Battery operation as you like
- Leave laptop plugged in at night when backup runs



Power Options Properties

Advanced | Hibernate | Power Management

Power Schemes | Alarms | Power Meter

Select the power scheme with the most appropriate settings for this computer. Note that changing the settings below will modify the selected scheme.

Power schemes: Laptop Normal

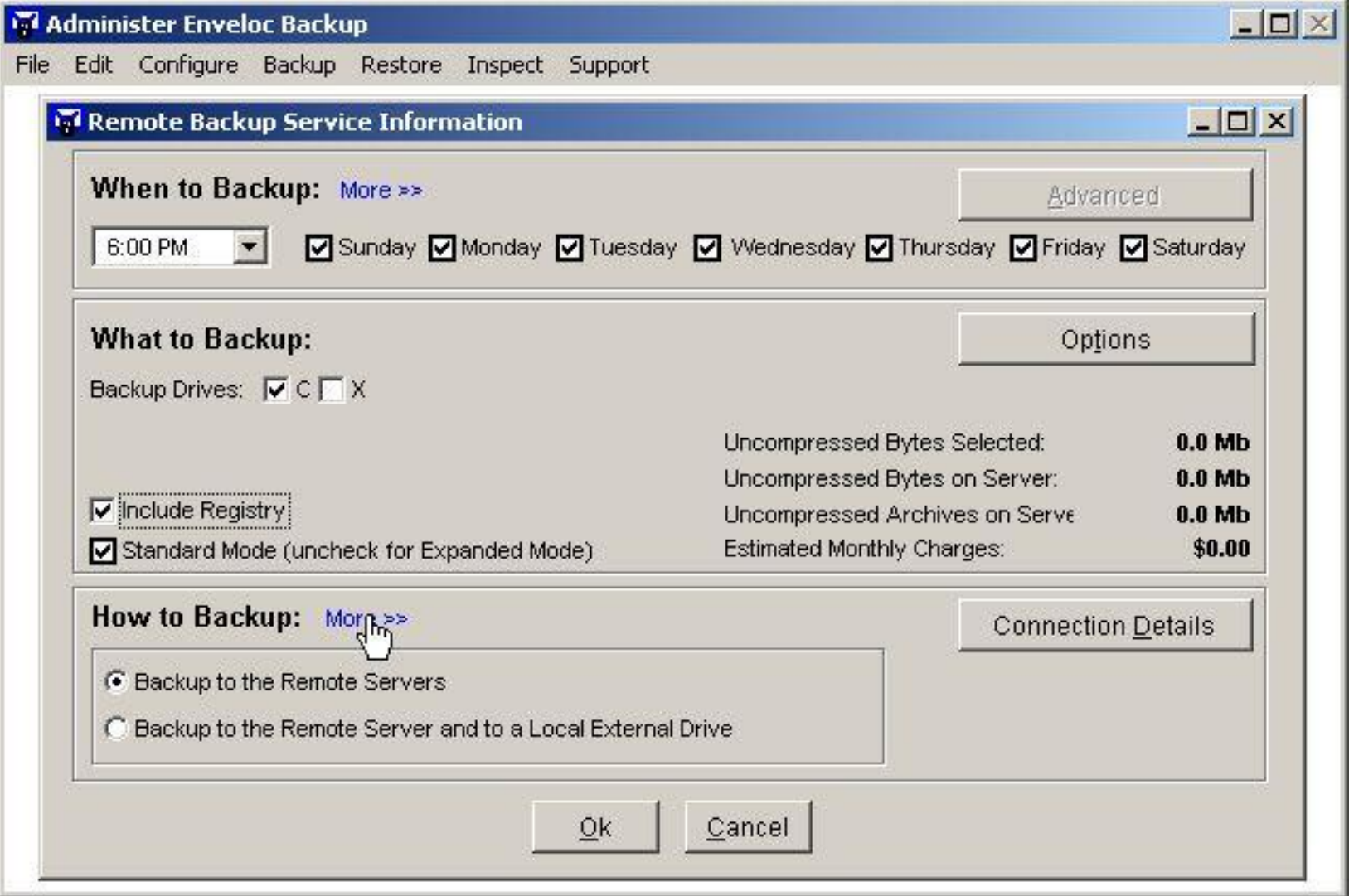
Save As... Delete

Settings for Laptop Normal power scheme

When computer is:  Plugged in  Running on batteries

Turn off monitor:	Never	After 5 mins
Turn off hard disks:	Never	After 20 mins
System standby:	Never	After 1 hour
System hibernates:	Never	Never

OK Cancel Apply



Administer Enveloc Backup

File Edit Configure Backup Restore Inspect Support

Remote Backup Service Information

When to Backup: [More >>](#)

[Advanced](#)

6:00 PM Sunday Monday Tuesday Wednesday Thursday Friday Saturday

What to Backup:

[Options](#)

Backup Drives: C X

[Include Registry](#)

Standard Mode (uncheck for Expanded Mode)

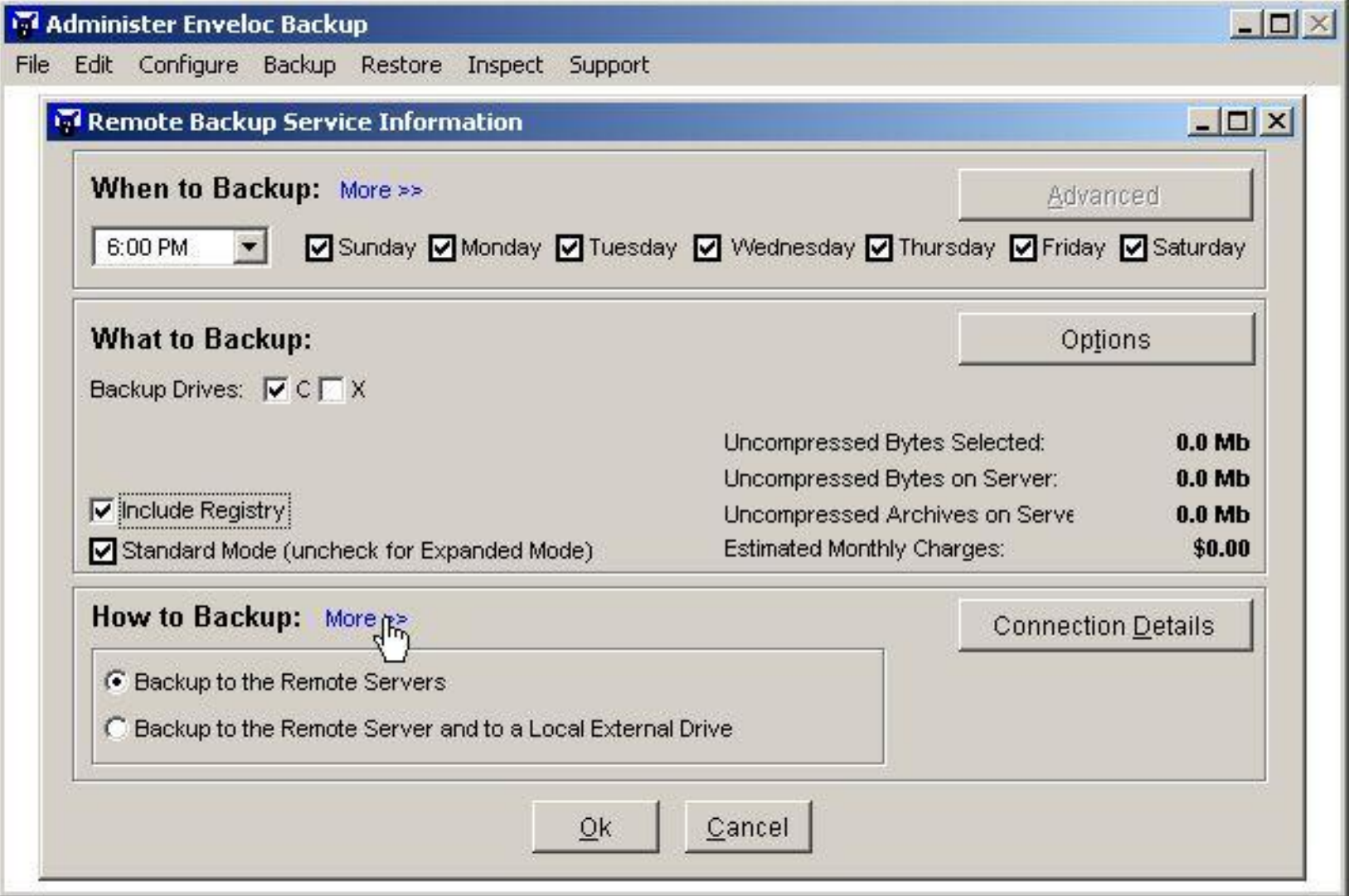
Uncompressed Bytes Selected: **0.0 Mb**
Uncompressed Bytes on Server: **0.0 Mb**
Uncompressed Archives on Serve: **0.0 Mb**
Estimated Monthly Charges: **\$0.00**

How to Backup: [More >>](#)

[Connection Details](#)

- Backup to the Remote Servers
- Backup to the Remote Server and to a Local External Drive

[Ok](#) [Cancel](#)



Administer Enveloc Backup

File Edit Configure Backup Restore Inspect Support

Remote Backup Service Information

When to Backup: [More >>](#)

[Advanced](#)

6:00 PM Sunday Monday Tuesday Wednesday Thursday Friday Saturday

What to Backup:

[Options](#)

Backup Drives: C X

- [Include Registry](#)
- Standard Mode (uncheck for Expanded Mode)

Uncompressed Bytes Selected:	0.0 Mb
Uncompressed Bytes on Server:	0.0 Mb
Uncompressed Archives on Serve:	0.0 Mb
Estimated Monthly Charges:	\$0.00

How to Backup: [More >>](#)

[Connection Details](#)

- Backup to the Remote Servers
- Backup to the Remote Server and to a Local External Drive

[Ok](#) [Cancel](#)

Administer Enveloc Backup

File Edit Configure Backup Restore Inspect Support

Pro or LocalRemote

Remote Backup may operate in one of two modes: *Pro* or *LocalRemote*

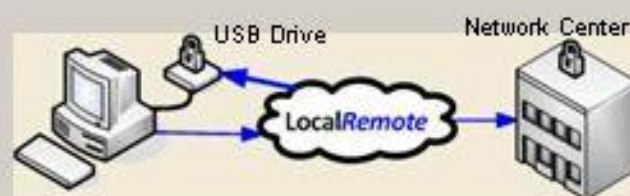
Pro

- Stores backup sets as follows:
 - ♦ 1 copy at primary secure remote server site
 - ♦ 1 copy at secondary secure remote server site
Server sites are geographically separate
- No additional hardware required
- Priority telephone support



LocalRemote

- Stores backup sets as follows:
 - ♦ 1 copy to USB attached hard drive
 - ♦ 1 copy at primary secure remote server site
- Requires user-supplied external USB drive **(please attach now)** [More >>](#)
- Standard telephone support



You will be able to select and confirm which mode at the Service screen

Ok

Administer Enveloc Backup

File Edit Configure Backup Restore Inspect Support

Remote Backup Service Information

When to Backup: [More >>](#)

[Advanced](#)

6:00 PM

Sunday Monday Tuesday Wednesday Thursday Friday Saturday

What to Backup:

[Options](#)

Backup Drives: C X

Include Registry

Standard Mode (uncheck for Expanded Mode)

Uncompressed Bytes Selected: **0.0 Mb**

Uncompressed Bytes on Server: **0.0 Mb**

Uncompressed Archives on Serve: **0.0 Mb**

Estimated Monthly Charges: **\$0.00**

How to Backup: [More >>](#)

[Connection Details](#)

Backup to the Remote Servers

Backup to the Remote Server and to a Local External Drive

Ok

Cancel

Administer Enveloc Backup

File Edit Configure Backup Restore Inspect Support

Remot

When

6:00 P

What

Backup

Includ

Stan

How to

Bac

Bac

Advanced Backup Options

Select Working Drive - Backup Sets Created and Transmitted from Here

If this machine has more than one drive (internal or USB-attached), you may select the largest, emptiest drive for workspace. Folder 'enveloc' will be created in the root.

Drive C Total Space: 39.93 Gb Free Space: 30.59 Gb 76.61 % Current Drive

Use Archive Bit and/or File Modify Date

The default setting is to select files only by Archive Bit status. This is usually best. You may optionally allow file backup selection by modified date in addition to archive bit status. You may also select files strictly by modified date. These options may or may not work properly in certain conditions.

- Use Archive Bit Only (default)
- Use Archive Bit or Modified Date
- Use Modified Date Only

Ok

Cancel

aturday

0.0 Mb

0.0 Mb

0.0 Mb

\$0.00

tails

Administer Enveloc Backup

File Edit Configure Backup Restore Inspect Support

Remote Backup Service Information

When to Backup: [More >>](#)

[Advanced](#)

6:00 PM

Sunday Monday Tuesday Wednesday Thursday Friday Saturday

What to Backup:

[Options](#)

Backup Drives: C X

Include Registry

Standard Mode (uncheck for Expanded Mode)

Uncompressed Bytes Selected: **0.0 Mb**

Uncompressed Bytes on Server: **0.0 Mb**

Uncompressed Archives on Serve: **0.0 Mb**

Estimated Monthly Charges: **\$0.00**

How to Backup: [More >>](#)

[Connection Details](#)

Backup to the Remote Servers

Backup to the Remote Server and to a Local External Drive

Ok

Cancel

Administer Enveloc Backup

File Edit Configure Backup Restore Inspect Support

Remote Backup Service Information

When to Backup: More >>

6:00 PM

Internet Connection Details

- I am usually constantly connected to the Internet through my network, DSL, etc.
- I usually connect by letting my modem dial the following Dial-Up Connection
- I am usually connected through a Proxy Server

Use this Dial-Up Connection if my constant connection is not available

[Empty dropdown menu]

Use this Backup Service:

Enveloc [dropdown arrow]

Ok Cancel

Ok Cancel

What t

Backup l

Includ

Stand

How to

Bac

Bac

aturday

0.0 Mb
0.0 Mb
0.0 Mb
\$0.00

tails

Administer Enveloc Backup

File Edit Configure Backup Restore Inspect Support

Remote Backup Service Information

When to Backup: More >>

Advanced

6:00 PM

Internet Connection Details

- I am usually constantly connected to the Internet through my network, DSL, etc.
- I usually connect by letting my modem dial the following Dial-Up Connection
- I am usually connected through a Proxy Server

Use this Dial-Up Connection if my constant connection is not available

[Empty dropdown menu]

Use this Backup Service:

Enveloc [dropdown arrow]

Ok Cancel

Ok Cancel

What t

Backup l

Includ

Stand

How to

Bac

Bac

aturday

0.0 Mb
0.0 Mb
0.0 Mb
\$0.00

tails

Administer Enveloc Backup [Window Title Bar]

File Edit Configure Backup Restore Inspect Support

Remote Backup Service Information [Window Title Bar]

When to Backup: [More >>](#)

[Advanced](#)

6:00 PM [Dropdown] Sunday Monday Tuesday Wednesday Thursday Friday Saturday

What to Backup:

[Options](#)

Backup Drives: C X

- Include Registry
- Standard Mode (uncheck for Expanded Mode)

Uncompressed Bytes Selected:	0.0 Mb
Uncompressed Bytes on Server:	0.0 Mb
Uncompressed Archives on Serve:	0.0 Mb
Estimated Monthly Charges:	\$0.00

How to Backup: [More >>](#)

[Connection Details](#)

- Backup to the Remote Servers
- Backup to the Remote Server and to a Local External Drive

[Ok](#) [Cancel](#)

Administer Enveloc Backup [Window Title Bar]

File Edit Configure Backup Restore Inspect Support

Remote Backup Service Information [Sub-Window Title Bar]

When to Backup: [More >>](#)

[Advanced](#)

6:00 PM [Dropdown] Sunday Monday Tuesday Wednesday Thursday Friday Saturday

What to Backup:

[Options](#)

Enveloc Alert - Standard Mode [Alert Window Title Bar]



By checking this box, you are instructing the system that you will manually add any new folder to the backup selection list. Is this what you want to do?

How to Backup: [More >>](#)

[Connection Details](#)

- Backup to the Remote Servers
- Backup to the Remote Server and to a Local External Drive

Administer Enveloc Backup

File Edit Configure Backup Restore Inspect Support

Select Directories to Backup from Drive C [Standard Mode]

C:\ * 54,647,423 * (7,735,950,362)

File Name

Important Notice - Read Carefully

You are in Standard Mode.

New folders Outside of those already selected will have to be added manually.


New folders Inside those already selected will be added automatically.


**Yellow Folders (checked) will be Backed Up.
White Folders (unchecked) will be NOT be Backed Up.**

Read Again

Continue

Directory * Size to Backup * (Total Size)  Partial  Prohibited  File to Backup

 Directory to Backup

 Directory to Skip

Ok

Cancel

Administer Enveloc Backup

File Edit Configure Backup Restore Inspect Support

Select Directories to Backup from Drive C [Standard Mode]

File Name
<input type="checkbox"/> C:\ * 54,647,423 * (7,735,950,362)
<input type="checkbox"/> Dell * 0 * (1,419,272)
<input type="checkbox"/> Documents And Settings * 0 * (0)
<input checked="" type="checkbox"/> Administrator * 18,175,704 * (73,764,768)
<input checked="" type="checkbox"/> All Users * 262,144 * (262,144)
<input checked="" type="checkbox"/> Application Data * 35,750,855 * (36,858,02)
<input checked="" type="checkbox"/> Desktop * 1,391 * (1,391)
<input checked="" type="checkbox"/> Documents * 411,513 * (1,785,899)
<input checked="" type="checkbox"/> Drm * 0 * (0)
<input checked="" type="checkbox"/> Favorites * 205 * (205)
<input checked="" type="checkbox"/> Start Menu * 146,257 * (146,257)
<input checked="" type="checkbox"/> Templates * 0 * (0)
<input type="checkbox"/> Default User * 0 * (10,878,159)
<input type="checkbox"/> Localservice * 0 * (64,482)
<input type="checkbox"/> Networkservice * 0 * (78,376)
<input type="checkbox"/> Downloads * 0 * (22,072,989)
<input type="checkbox"/> Drivers * 0 * (13,584,096)

Directory * Size to Backup * (Total Size) Partial Prohibited File to Backup
 Directory to Backup
 Directory to Skip

Ok Cancel

Administer Envelop Backup

File Edit Configure Backup Restore Inspect Support

Select Directories to Backup from Drive C [Standard Mode]

	File Name
<input type="checkbox"/> Cookies * 0 * (34,759)	
<input type="checkbox"/> Desktop * 0 * (483)	
<input checked="" type="checkbox"/> Favorites * 0 * (1,966)	
<input checked="" type="checkbox"/> Local Settings * 0 * (14,697,897)	
<input checked="" type="checkbox"/> My Documents * 2,391,452 * (14,911,288)	
<input type="checkbox"/> Address Change Notifications * 0 * (95)	
<input checked="" type="checkbox"/> Commissions * 0 * (9,337,344)	
<input checked="" type="checkbox"/> Dnr * 0 * (27,153,636)	
<input type="checkbox"/> Mail Merge Docs * 0 * (179,200)	
<input type="checkbox"/> Misc * 0 * (2,888,193)	
<input type="checkbox"/> My Ebooks * 0 * (0)	
<input type="checkbox"/> My Music * 0 * (542)	
<input type="checkbox"/> My Pictures * 0 * (572)	
<input checked="" type="checkbox"/> My Shapes * 0 * (0)	
<input type="checkbox"/> Old Mail Merge Docs * 0 * (173,056)	
<input checked="" type="checkbox"/> Printscreen Files * 2,391,452 * (2,257,701)	
<input checked="" type="checkbox"/> Method * 0 * (7,999)	

Directory * Size to Backup * (Total Size) Partial Prohibited File to Backup
 Directory to Backup
 Directory to Skip

Ok Cancel

Administer Enveloc Backup

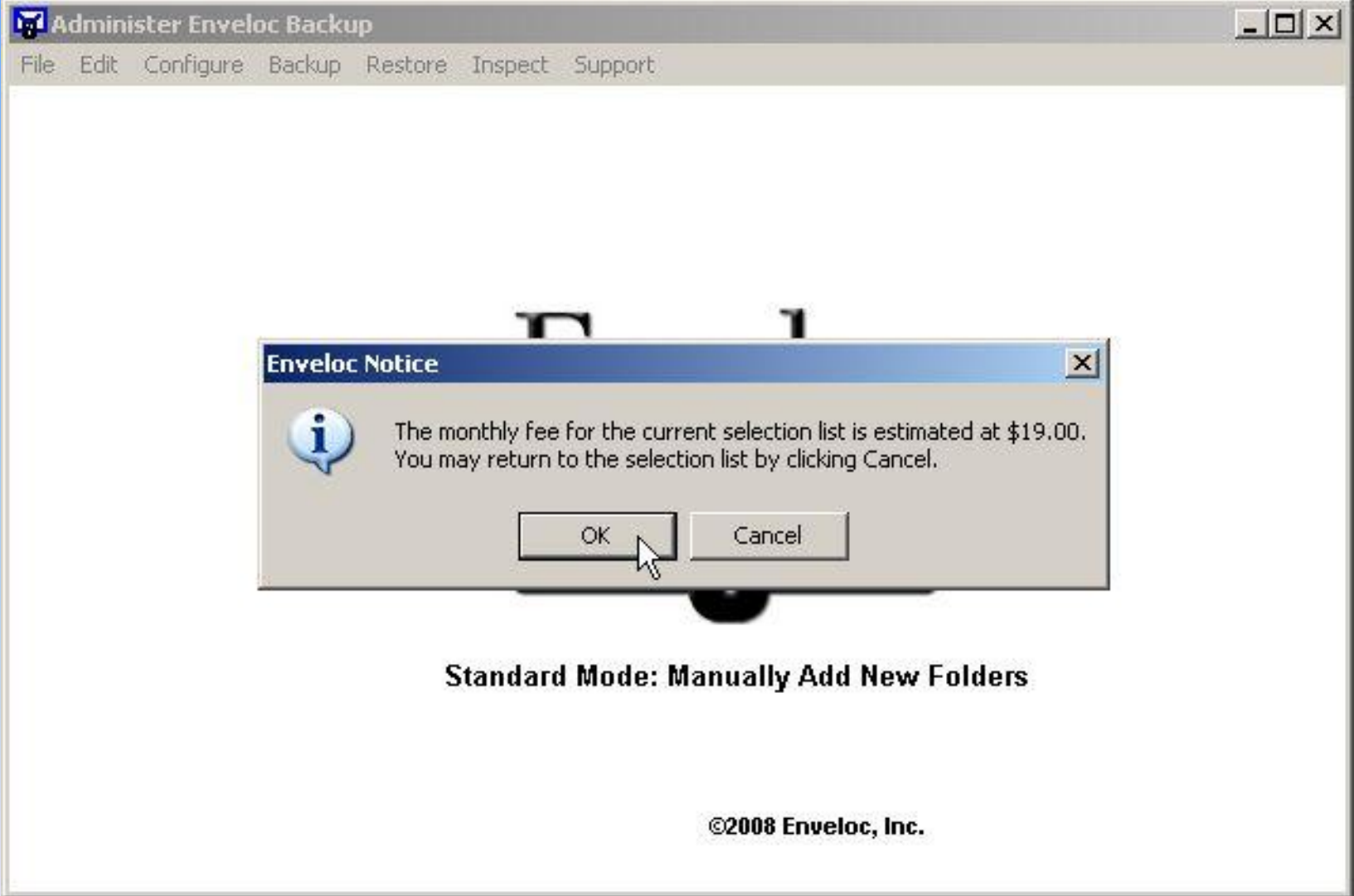
File Edit Configure Backup Restore Inspect Support

Select Directories to Backup from Drive C [Standard Mode]

File Name
<input type="checkbox"/> My Pictures * 0 * (572)
<input type="checkbox"/> My Shapes * 0 * (0)
<input type="checkbox"/> Old Mail Merge Docs * 0 * (173,056)
<input checked="" type="checkbox"/> Printscreen Files * 2,391,452 * (2,257,7
<input type="checkbox"/> Nethood * 0 * (7,999)
<input type="checkbox"/> Printhood * 0 * (0)
<input type="checkbox"/> Recent * 0 * (17,523)
<input type="checkbox"/> Sendto * 0 * (0)
<input type="checkbox"/> Start Menu * 0 * (30,138)
<input type="checkbox"/> Templates * 0 * (23,929)
<input type="checkbox"/> Userdata * 0 * (32,852)
<input type="checkbox"/> All Users * 0 * (39,053,922)
<input type="checkbox"/> Default User * 0 * (10,878,159)
<input type="checkbox"/> Localservice * 0 * (64,482)
<input type="checkbox"/> Networkservice * 0 * (78,376)
<input type="checkbox"/> Downloads * 0 * (22,072,989)
<input type="checkbox"/> Drivers * 0 * (13,584,096)

Directory * Size to Backup * (Total Size) Partial Prohibited File to Backup
 Directory to Backup
 Directory to Skip

Ok Cancel




Standard Mode: Manually Add New Folders

©2008 Enveloc, Inc.

Administer Enveloc Backup [minimize] [maximize] [close]

File Edit Configure Backup Restore Inspect Support

Enveloc Notice [close]

 Please be sure your computer's connection to the internet is accessible. Your system will now be registered with your Service Provider.

Standard Mode: Manually Add New Folders

©2008 Enveloc, Inc.

Administer Enveloc Backup [minimize] [maximize] [close]

File Edit Configure Backup Restore Inspect Support

Connected to Enveloc [close]

Logging in to Backup Server

To provide efficiency during normal operation, Cancel requests may take several seconds

Standard Mode: Manually Add New Policies

Administer Enveloc Backup - ID AA827101



File Edit Configure Backup Restore Inspect Support

Enveloc Notice



Your system will now automatically backup according to the schedule you have selected. Thank you for using Enveloc.

OK

Standard Mode: Manually Add New Folders

©2008 Enveloc, Inc.

Administer Enveloc Backup - ID AA827101

File Edit Configure Backup Restore Inspect Support

Enveloc Alert



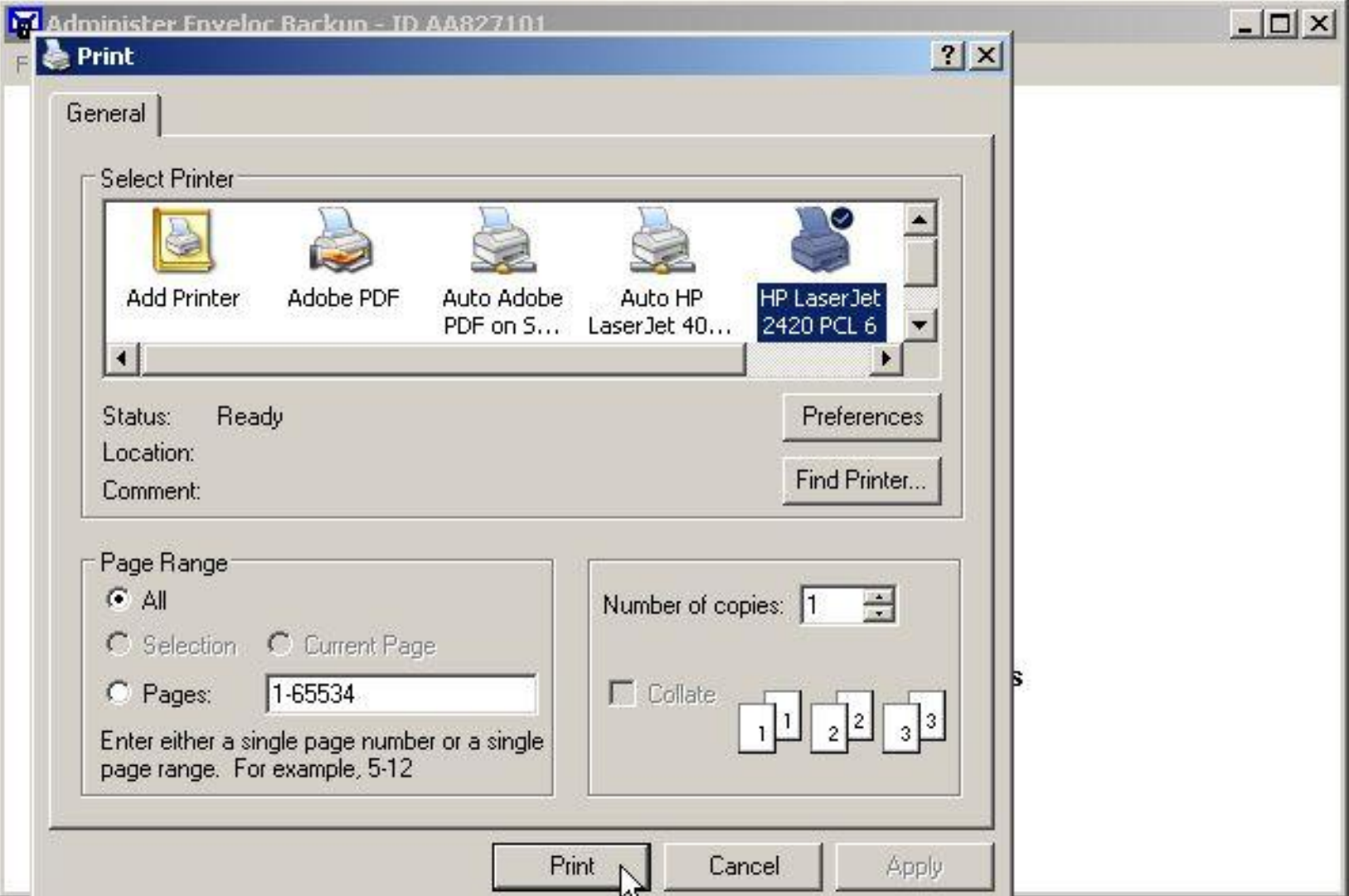
Just to be sure you have a copy of your Encryption Key, we'll print it on 2 sheets of paper. File these safely with one copy offsite so that you can restore information when you need to. Print Encryption Key? [you will be able to select the printer]

Yes

No

Standard Mode: Manually Add New Folders

©2008 Enveloc, Inc.



Administer Envelope Backup - ID AA827101

Print

General

Select Printer







Add Printer Adobe PDF Auto Adobe PDF on S... Auto HP LaserJet 40... **HP LaserJet 2420 PCL 6**

Status: Ready

Preferences

Location:

Find Printer...

Comment:

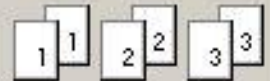
Page Range

- All
- Selection
- Current Page
- Pages:

Enter either a single page number or a single page range. For example, 5-12

Number of copies:

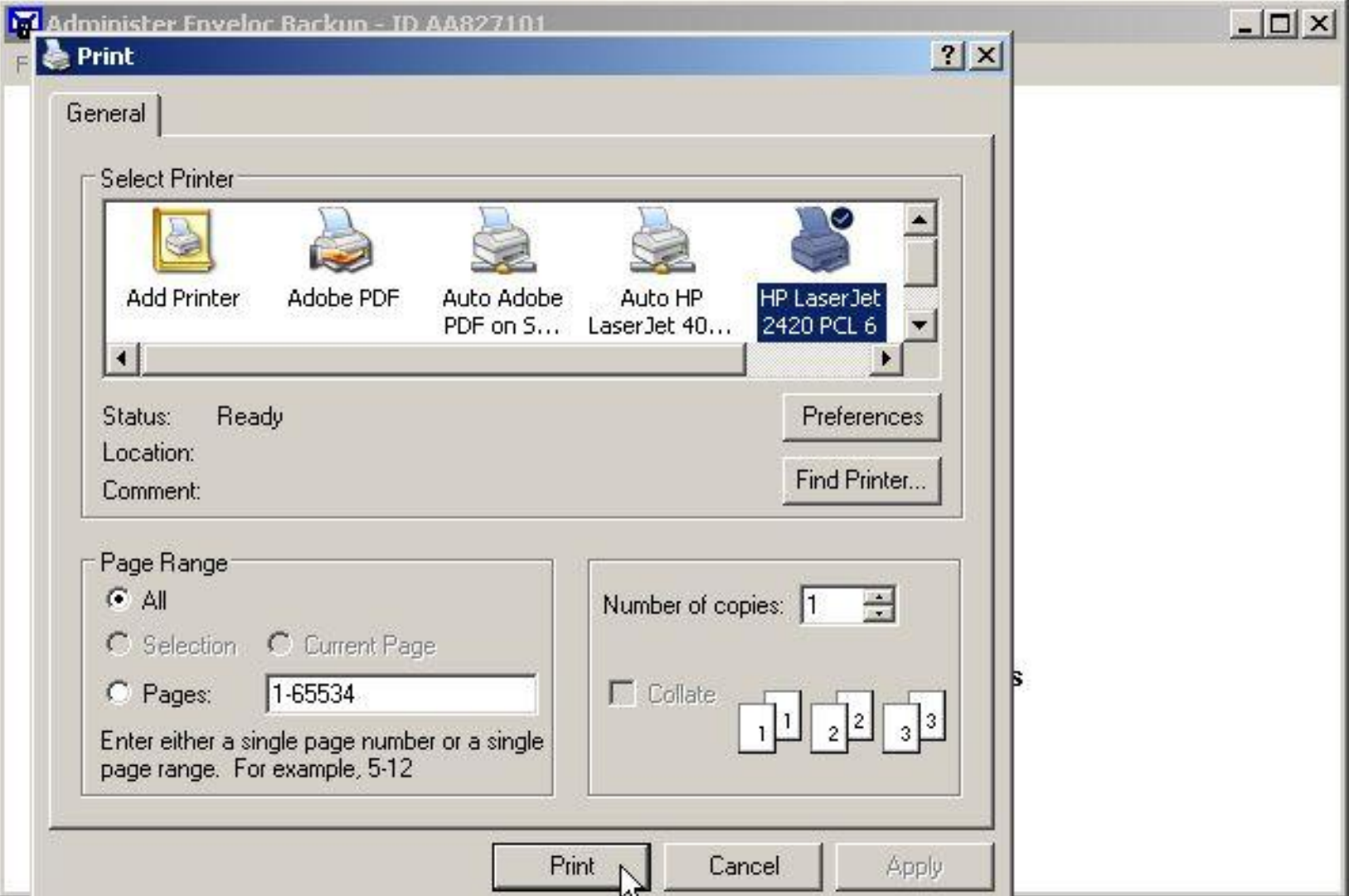
Collate



Print

Cancel

Apply



Administer Envelope Backup - ID AA827101

Print

General

Select Printer







Add Printer Adobe PDF Auto Adobe PDF on S... Auto HP LaserJet 40... **HP LaserJet 2420 PCL 6**

Status: Ready

Preferences

Location:

Find Printer...

Comment:

Page Range

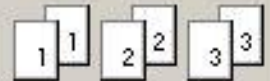
- All
- Selection
- Current Page

Pages: 1-65534

Enter either a single page number or a single page range. For example, 5-12

Number of copies: 1

Collate



Print

Cancel

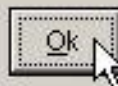
Apply

Power Options Information

Important Information for Laptop Users

Power Options

- Backup will not run if computer is in Sleep or Hibernation state
- Assure your computer is awake when plugged in
 - ◆ Click the Start button
 - ◆ Choose Settings
 - ◆ Choose Control Panel
 - ◆ Choose Power Options or Power Management
 - ◆ Choose Power Schemes
- Set the computer to never Sleep or Hibernate when Plugged In
- Set options for Battery operation as you like
- Leave laptop plugged in at night when backup runs



Power Options Properties

Advanced Hibernate Power Manager
Power Schemes Alarms Power Meter

Select the power scheme with the most appropriate settings for this computer. Note that changing the settings below will modify the selected scheme.

Power schemes
Laptop Normal

Save As... Delete

Settings for Laptop Normal power scheme

When computer is: Plugged in Running on batteries

Turn off monitor:	Never	After 5 mins
Turn off hard disk:	Never	After 20 mins
System standby:	Never	After 1 hour
System hibernates:	Never	Never

OK Cancel Apply

Run as Desktop Application or Service

Remote Backup may run as an **Application** or as a **Service**:

Application

- Enveloc Timer runs in the foreground
 - ◆ Minimizes in System Tray
 - ◆ Must not be closed
 - ◆ Close warning can be suppressed
 - ◆ Gives you 5 minutes notice before backup
- Backup runs automatically unless you log off
- You can see the progress screen as backup runs
- Success message when backup completes

Service

- Timer runs in background as Windows service
 - ◆ Cannot be accidentally closed
 - ◆ No notice prior to start of backup
 - ◆ Desktop icon turns green when backup in progress
- Backup runs automatically as long as machine is on
- Backup progress available only by clicking logo
- Success message when backup completes

This setting may be changed at any time by choosing **Configure/Service/Advanced**.

Show Advanced Settings

Continue

Set Advanced Time Options

If you wish the system to automatically stop transmission at a certain time whether it is finished or not, click the box and set the time. It will resume at the next scheduled time.

Stop transmission at time on right

You may also wish to Reboot or Power Off when the backup is finished. You will need to check the Backup Log after powering up the system to confirm the status of the last backup.

Reboot after Backup
 Power Off after Backup

The Enveloc Timer normally issues a warning to not close it and to not shut down or log out of Windows. You may optionally suppress this message. However, if the Timer closes your backup will not take place as scheduled!

Suppress Timer Warning Message

You may run Remote Backup as a Service on your Windows 2000 or later machine. Backup status may be viewed with Remote Backup Administrator. [More >>](#)

Run Remote Backup As Service Run Service as User

Ok Cancel

Set Advanced Time Options

If you wish the system to automatically stop transmission at a certain time whether it is finished or not, click the box and set the time. It will resume at the next scheduled time.

Stop transmission at time on right ▾

You may also wish to Reboot or Power Off when the backup is finished. You will need to check the Backup Log after powering up the system to confirm the status of the last backup.

Reboot after Backup
 Power Off after Backup

The Enveloc Timer normally issues a warning to not close it and to not shut down or log out of Windows. You may optionally suppress this message. However, if the Timer closes your backup will not take place as scheduled!

Suppress Timer Warning Message

You may run Remote Backup as a Service on your Windows 2000 or later machine. Backup status may be viewed with Remote Backup Administrator. [More >>](#)

Run Remote Backup As Service Run Service as User

Ok Cancel

Enveloc



The service will be updated. This could take up to 30 seconds with no activity after this message closes. Please be patient.

OK

Enveloc



Will now start and stop the service to verify login and password.

OK



Enveloc



Test Start and Stop Completed Successfully

OK



Remote Backup may run as an **Application** or as a **Service**:

Application

- Enveloc Timer runs in the foreground
 - ◆ Minimizes in System Tray
 - ◆ Must not be closed
 - ◆ Close warning can be suppressed
 - ◆ Gives you 5 minutes notice before backup
- Backup runs automatically unless you log off
- You can see the progress screen as backup runs
- Success message when backup completes

Service

- Timer runs in background as Windows service
 - ◆ Cannot be accidentally closed
 - ◆ No notice prior to start of backup
 - ◆ Desktop icon turns green when backup in progress
- Backup runs automatically as long as machine is on
- Backup progress available only by clicking logo
- Success message when backup completes

This setting may be changed at any time by choosing Configure/Service/Advanced.

Show Advanced Settings

Continue

Enveloc Notice

 Please stand by while communications will be tested to verify firewall permissions. This will only take a moment.

OK

Standard Mode: Manually Add New Folders



Connected to Enveloc

Checking Server Response

To provide efficiency during normal operation, Cancel requests may take several seconds



Connected to Enveloc

Checking for Downloads

To provide efficiency during normal operation, Cancel requests may take several seconds





Standard Mode: Manually Add New Folders

Administer Enveloc Backup - ID AA827101

File Edit Configure Backup Restore Inspect Support

Enveloc

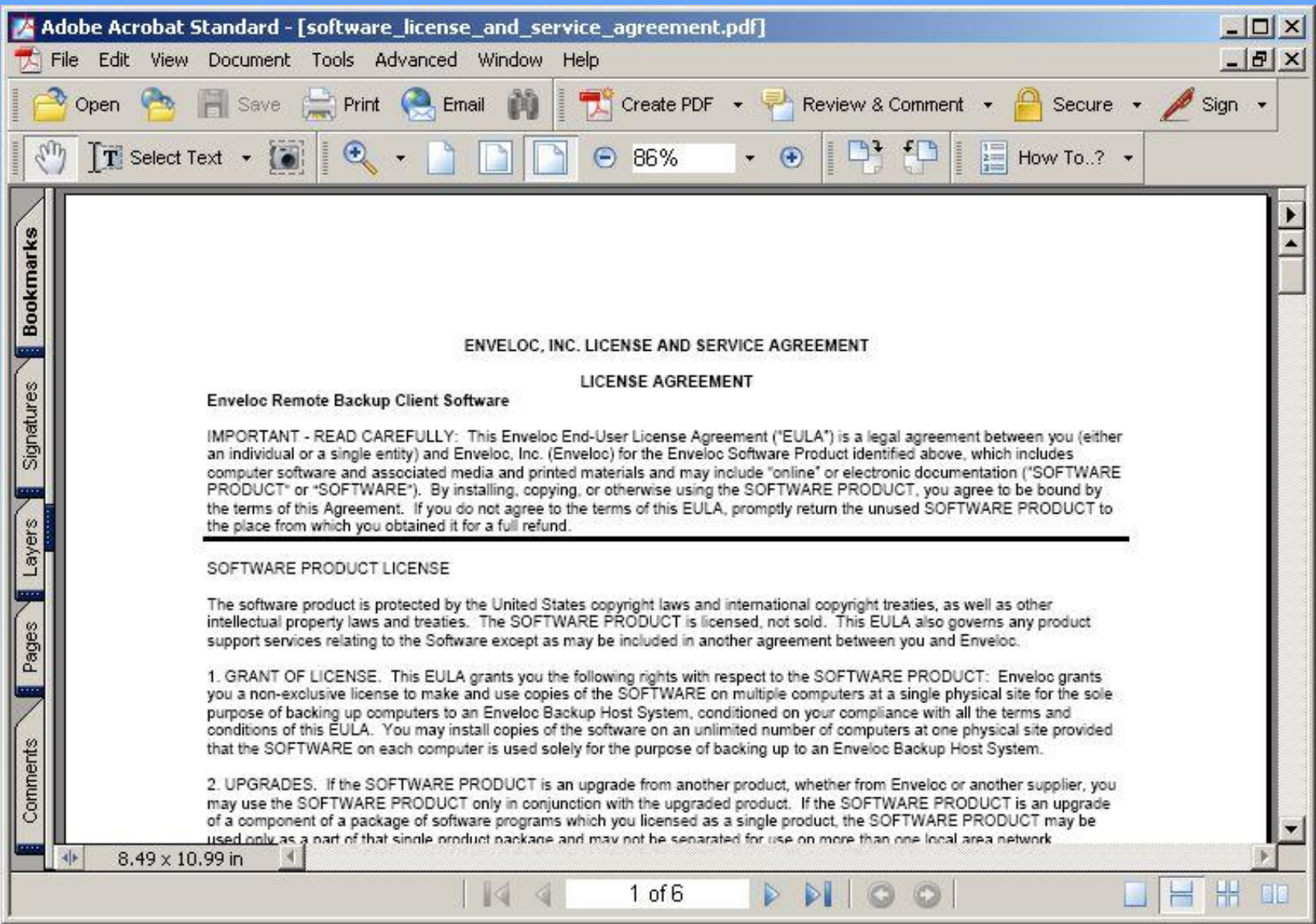


The License Agreement document will be opened so that you may select a printer. When it opens, click File/Print.

OK

Standard Mode: Manually Add New Folders

©2008 Enveloc, Inc.



Administer Enveloc Backup - ID AA827101

File Edit Configure Backup Restore Inspect Support

Enveloc Notice



You may now configure the Open File Access module which will permit the backup of files in use by other applications. OFA will have a small impact on computer speed so is offered as an option.

OK

Standard Mode: Manually Add New Folders

©2008 Enveloc, Inc.

Configure Open File Access

Driver

Logging

Groups

Uninstall OFA

Open File Access Not Installed

Install Now

What's This?

- 1. Verify Driver Status
- 2. Pause Driver
- 3. Start Driver
- 4. Keep Driver Paused During Backup
- 5. Stop All Caching

Update


Exit

Configure Open File Access

Driver | Logging | Groups | Uninstall OFA

Open File Access Not Installed Install Now What's This?

Enveloc Request

 Ready to install Open File Access. Install Now?

1. Verify
 2. Pause
 3. Start
 4. Keep
 5. Stop All Caching

Enveloc Information



Installing OFA control service

OK

Configure Open File Access

Driver | Logging | Groups | Uninstall OFA

Open File Access Installed Install Now What's This?

Driver i

Enveloc Request

 Installation is complete. The Driver will now be tested.

1. V 2. P 3. S 4. K 5. Stop All Caching

OK

Update Exit


Configure Open File Access

Driver | Logging | Groups | Uninstall OFA

Open File Access Installed
Driver is Paused - Will I

Install Now What's This?

Enveloc Alert

 Driver is Paused.

OK

1. Verify Driver Status
 2. Pause Driver
 3. Start Driver
 4. Keep Driver Paused
 5. Stop All Caching

Update Exit


Configure Open File Access

Driver | Logging | Groups | Uninstall OFA

Open File Access Installed
Driver is Started.

1. Verify Driver Status
 2. Pause Driver
 3. Start Driver
 4. Keep Driver Paused
 5. Stop All Caching

Enveloc Alert

 Driver is Started.


Configure Open File Access

Driver | Logging | Groups | Uninstall OFA

Open File Access Installed
Driver is Paused - Will I

Install Now What's This?

Enveloc Alert

 Driver is Paused.

OK

1. Verify Driver Status
 2. Pause Driver
 3. Start Driver
 4. Keep Driver Paused
 5. Stop All Caching

Update Exit

Configure Open File Access

Driver | Logging | **Groups** | Uninstall OFA

Group Name

Add New Group

Select Group

1. Update Batch Group Files
 2. Delete Batch Group

Update | Exit

Configure Open File Access

Driver | Logging | **Groups** | Uninstall OFA

Group Name

Add New Group Printscreen

Select Group

1. Update Batch Group Files
 2. Delete Batch Group

Update Exit

Configure Open File Access

Driver

Logging

Groups

Uninstall OFA

Group Name

Add New Group

Printscreen

Select Group

[Empty dropdown menu]

- 1. Update Batch Group Files
- 2. Delete Batch Group

Update

Exit

Configure Open File Access

Driver | Logging | **Groups** | Uninstall OFA

Group Name

Add New Group

Select Group

Printscreen

printscreen

1. Update Batch Group Files

2. Delete Batch Group

Update Exit

Configure Open File Access

Driver | Logging | **Groups** | Uninstall OFA

Group Name

Add New Group [Printscreen]

Select Group [printscreen]

1. Update Batch Group Files
 2. Delete Batch Group

Update Exit

Administer Enveloc Backup - ID AA827101

File Edit Configure Backup Restore Inspect Support

Configure Open File Access

Driver | Logging | **Groups** | Uninstall OFA

Group Name

Add New Group

Select Group

Update

Exit

Enveloc Request

Update files for group printscreen?

Yes No

©2008 Enveloc, Inc.

Administer Enveloc Backup - ID AA827101



File Edit Configure Backup Restore Inspect Support

Select files for Group Printscreens



You may combine specific file selections with entire folders. Maximum 1,000 files may be included.

Add Files: Use the Shift or Ctrl key with the mouse or arrow key to select multiple files. Only the specific files you choose will be added. Files may be deselected but folders containing specific files cannot be deselected.

Add Folders: All Files in the Folder you choose will be included. Folder selections DO NOT recurse - subfolders must be selected separately. Folders specifying all files may be deselected as required.

Add Files

Add Folders



Ok

Cancel

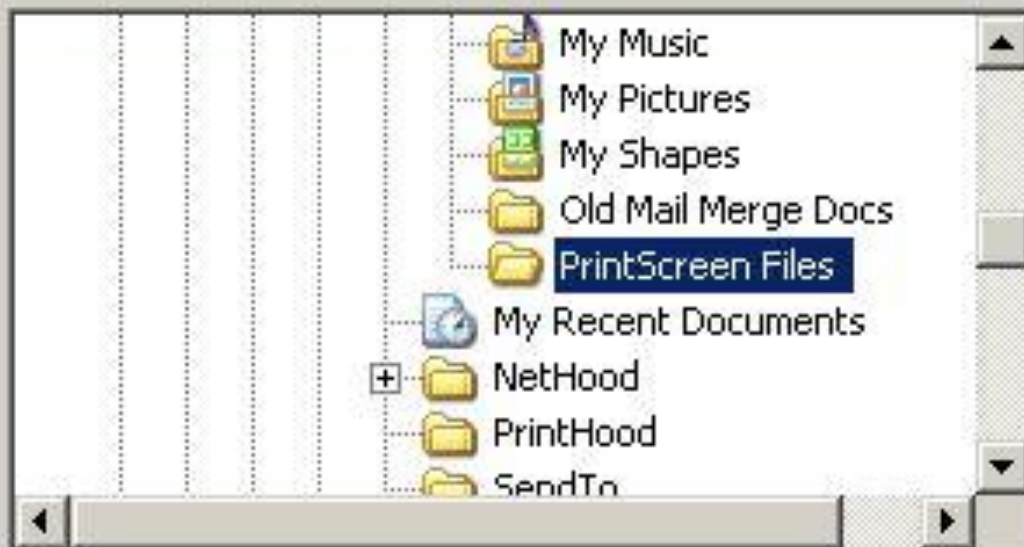
Add Folder



All Files in the Folder will be Selected

C:\Documents and Settings\Administrator\My Documents\PrintScreen Files

PrintScreen Files



OK

Cancel

Administer Enveloc Backup - ID AA827101



File Edit Configure Backup Restore Inspect Support

Select files for Group Printscreens



You may combine specific file selections with entire folders. Maximum 1,000 files may be included.

Add Files: Use the Shift or Ctrl key with the mouse or arrow key to select multiple files. Only the specific files you choose will be added. Files may be deselected but folders containing specific files cannot be deselected.

Add Folders: All Files in the Folder you choose will be included. Folder selections DO NOT recurse - subfolders must be selected separately. Folders specifying all files may be deselected as required.

Add Files

Add Folders

C:\DOCUMENTS AND SETTINGS\ADMINISTRATOR\MY DOCUMENTS\PRINTSCREE

Ok

Cancel

Administer Enveloc Backup - ID AA827101

File Edit Configure Backup Restore Inspect Support

Configure Open File Access

Driver | Logging | **Groups** | Uninstall OFA

Group Name

Add New Group

Select Group

OK

Update | Exit

Enveloc Alert

 78 files updated in group Printscreen

OK

©2008 Enveloc, Inc.

Configure Open File Access

Driver

Logging

Groups

Uninstall OFA

Group Name

Add New Group

Printscreen

Select Group

printscreen

- 1. Update Batch Group Files
- 2. Delete Batch Group

Update

Exit

Administer Enveloc Backup - ID AA827101



File Edit Configure Backup Restore Inspect Support



Standard Mode: Manually Add New Folders

©2008 Enveloc, Inc.

My Documents

My Computer

My Network Places

Recycle Bin

Shortcut to PrintScre...

Remote Backup

Remote Enveloc Backup

Analyze Directories and Files

Saving Directory and File Structure

C:\DOCUMENTS AND SETTINGS\ADMINISTRATOR\NETHOOD\SYSDVOL ON VALARCHIVE\

Enveloc

Preparing to Backup - Do Not Cancel

©2007 Enveloc, Inc.

Start



12:45 PM

My Documents

My Computer

My Network Places

Recycle Bin

Shortcut to PrintScre...

Remote Backup

Remote Enveloc Backup

Analyze Directories and Files

Saving Directory and File Structure

C:\WINDOWS\IE7UPDATES\KB942615-IE7\

Enveloc

Preparing to Backup - Do Not Cancel

©2007 Enveloc, Inc.

Start

Remote Enveloc Backup

12:45 PM

- My Documents
- My Computer
- My Network Places
- Recycle Bin
- Shortcut to PrintScre...
- Remote Backup

Remote Enveloc Backup

Analyze Directories and Files

Saving Directory and File Structure

C:\DOCUMENTS AND SETTINGS\ADMINISTRATOR\APPLICATION DATA\ADOBE\ACROBAT\6.0\PREFERENCES\

Enveloc

Initial Backup: Standard Mode

©2007 Enveloc, Inc.

My Documents

My Computer

My Network Places

Recycle Bin

Shortcut to PrintScre...

Remote Backup

Remote Enveloc Backup

Analyze Directories and Files

Saving Directory and File Structure

C:\386\ASMS\7000\MSFT\

Enveloc

Initial Backup: Standard Mode

©2007 Enveloc, Inc.

Start

Remote Enveloc Backup

12:45 PM

My Documents

My Computer

My Network Places

Recycle Bin

Shortcut to PrintScre...

Remote Backup

Remote Enveloc Backup

Analyze Directories and Files

Analyzing Files to be Saved

C:\386

Enveloc

Initial Backup: Standard Mode

©2007 Enveloc, Inc.

Start

Remote Enveloc Backup

12:46 PM

- My Documents
- My Computer
- My Network Places
- Recycle Bin
- Shortcut to PrintScre...
- Remote Backup

Remote Enveloc Backup

Analyze Directories and Files

Analyzing Files to be Saved

C:\PROGRAM FILES\GRISOFT

Enveloc

Initial Backup: Standard Mode

©2007 Enveloc, Inc.

- My Documents
- My Computer
- My Network Places
- Recycle Bin
- Shortcut to PrintScre...
- Remote Backup

Remote Enveloc Backup

Initial Backup to Disk for Transmit

Encrypting and Compressing Files

Test Backup Integrity

Source	C:\Enveloc\AA827101\C\DOCUMENTS AND SETTINGS.esm
Files	35% DOCUMENTS AND SETTINGS\ADMINISTRATOR\MY DOCUN
Testing	Testing: DOCUMENTS AND SETTINGS\ADMINISTRATOR\MY DOCI

Initial Backup: Standard Mode

©2007 Enveloc, Inc.

My Documents

My Computer

My Network Places

Recycle Bin

Shortcut to PrintScre...

Remote Backup

Remote Enveloc Backup

Initial Backup to Disk for Transmit

Encrypting and Compressing Files

C:\WINDOWS

Enveloc

Initial Backup: Standard Mode

©2007 Enveloc, Inc.

Start

Remote Enveloc Backup

12:46 PM

My Documents

My Computer

My Network Places

Recycle Bin

Shortcut to PrintScre...

Remote Backup

Remote Enveloc Backup

Initial Backup to Disk for Transmit

Encrypting and Compressing Files

Backing Up Registry

Enveloc

Initial Backup: Standard Mode

©2007 Enveloc, Inc.

Start

Remote Enveloc Backup

12:46 PM

- My Documents
- My Computer
- My Network Places
- Recycle Bin
- Shortcut to PrintScre...
- Remote Backup

Remote Enveloc Backup

Initial Backup to Disk for Transmit

Encrypting and Compressing Files

Back **Enveloc Compress/Encrypt Progress**

30%	Item 4 of 13
11%	Enveloc/reg/LM/SOFTWARE

Cancel

To provide efficiency during normal operation,
Cancel requests may take several seconds

©2007 Enveloc, Inc.

- My Documents
- My Computer
- My Network Places
- Recycle Bin
- Shortcut to PrintScre...
- Remote Backup

Remote Enveloc Backup

Copy Initial Backup for Transmit

Copying Files

DOCUMENTS AND SETTINGS.ESM

Enveloc

Initial Backup: Standard Mode

©2007 Enveloc, Inc.

My Documents

My Computer

My Network Places

Recycle Bin

Shortcut to PrintScre...

Remote Backup

Remote Enveloc Backup

Outer Wrapper Encryption in Progress

©2007 Enveloc, Inc.

Start



Remote Enveloc Backup

12:47 PM

My Documents

My Computer

My Network Places

Recycle Bin

Shortcut to PrintScre...

Remote Backup

Remote Enveloc Backup

©2007 Enveloc, Inc.

Start



Remote Enveloc Backup

12:47 PM

My Documents

My Computer

My Network Places

Recycle Bin

Shortcut to PrintScre...

Remote Backup

Remote Enveloc Backup

©2007 Enveloc, Inc.

Start



Remote Enveloc Backup

12:47 PM

My Documents

My Computer

My Network Places

Recycle Bin

Shortcut to PrintScre...

Remote Backup

Remote Enveloc Backup

Connecting to Enveloc

Logging In

Connect Now Cancel

To provide efficiency during normal operation, Cancel requests may take several seconds

©2007 Enveloc, Inc.

Start



Remote Enveloc Backup

12:47 PM

My Documents

My Computer

My Network Places

Recycle Bin

Shortcut to PrintScre...

Remote Backup

Remote Enveloc Backup

Connected to Enveloc

Sending File: C20080515124732.ESM

Connect Now Cancel

To provide efficiency during normal operation, Cancel requests may take several seconds

©2007 Enveloc, Inc.

Start

Remote Enveloc Backup

12:47 PM

My Documents

My Computer

My Network Places

Recycle Bin

Shortcut to PrintScre...

Remote Backup

Remote Enveloc Backup

Sending File C20080515124732.ESM

Files Sent: 0 Total Files: 2 Now: 1291 kb/s Avg: 1562 kb/s

29% Bytes Sent: 3,287,154 Total Bytes: 11,028,054

71% Bytes Now: 3,287,154 File Total: 4,614,606

To provide efficiency during normal operation, Cancel requests may take several seconds

©2007 Enveloc, Inc.

Start



Remote Enveloc Backup

12:47 PM

- My Documents
- My Computer
- My Network Places
- Recycle Bin
- Shortcut to PrintScre...
- Remote Backup

Remote Enveloc Backup

Sending File C20080515124734.ESM

100%	Files Sent: 2	Total Files: 2
100%	Bytes Now: 20,147	File Total: 20,147
Checking for Downloads		

To provide efficiency during normal operation, Cancel requests may take several seconds

©2007 Enveloc, Inc.

- My Documents
- My Computer
- My Network Places
- Recycle Bin
- Shortcut to PrintScre...
- Remote Backup

Remote Enveloc Backup

Enveloc Backup

Initial Backup Complete

This phase of the initial backup is complete. See the backup log for details.



Press any Key to Remove this Message...

Remote Enveloc Backup



Enveloc Backup



Initial Backup Complete

This phase of the initial backup is complete. See the backup log for details.



Press any Key to Remove this Message...

Set Advanced Time Options

If you wish the system to automatically stop transmission at a certain time whether it is finished or not, click the box and set the time. It will resume at the next scheduled time.

Stop transmission at time on right

You may also wish to Reboot or Power Off when the backup is finished. You will need to check the Backup Log after powering up the system to confirm the status of the last backup.

Reboot after Backup
 Power Off after Backup

The Enveloc Timer normally issues a warning to not close it and to not shut down or log out of Windows. You may optionally suppress this message. However, if the Timer closes your backup will not take place as scheduled!

Suppress Timer Warning Message

You may run Remote Backup as a Service on your Windows 2000 or later machine. Backup status may be viewed with Remote Backup Administrator. [More >>](#)

Run Remote Backup As Service Run Service as User

Ok Cancel

Enveloc



The service will be updated. This could take up to 30 seconds with no activity after this message closes. Please be patient.

OK

Enveloc

Type	Description
EXE	Backup AA827101 18:00 Su Mo Tu We Th Fr Sa

My Network Places

Recycle Bin

Shortcut to PrintScre...

Remote Backup

Start



Enveloc

System tray icons and time: 12:48 PM